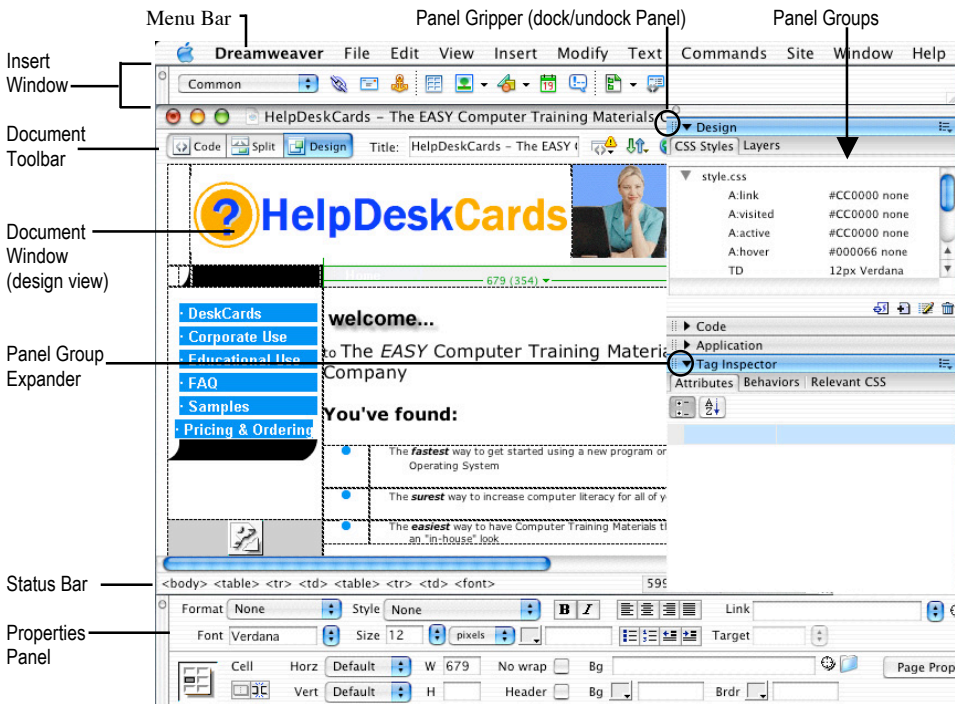




Dreamweaver MX Screen At A Glance



DeskCardHints

Dreamweaver Performance

Saving Often Avoids Data Loss and Clears Undo stack. Dreamweaver records all changes between saves, so Clicking Save will speed performance. For further enhancement, Click Edit on the Menu Bar, Preferences, then General. Lower "Maximum Number of History Steps" – the higher the steps remembered, the more memory is being used.

Prevent Creation of New Document Each time the program is started – since user will mostly be working with pre-existing pages. Click Edit on the Menu Bar, then Preferences, then General. Select the first option: "Show Only Site Window on Startup."

Use Clean Up HTML to Validate Obvious tag problems. Click Commands on the Menu Bar and then Click Clean Up HTML. Choose tags that cleanup is desired for and Click OK.

Create a Photo Album with Fireworks very easily. Requires Fireworks Installation. Click Commands on the Menu Bar and Click Create Web Photo Album command. Complete the form that appears – and other information below it – including setting default thumbnail size and more. Once OK is Clicked, Fireworks will process all images and thumbnails automatically. Created album is a table which can be edited (background color, borders, etc.)

Dreamweaver Appearance

Easily Clean Up the Workspace by Clicking Window on the Menu Bar and Clicking Arrange Panels to return all open panels to their default position. To toggle appearance of Property Inspector, press <Ctrl> + <F3>. To quickly toggle off all Panels, press <F4> (press again to show.)

Make O'Reilly Code Reference Legible by Clicking Window on the Menu Bar and Click Reference to Launch the O'Reilly HTML Reference. Click on the Right Arrow button to make font larger.

Set One-Click Code Formatting For all new web pages by Editing Preferences. Especially helpful to set spaces for indents, lowercase and uppercase, etc. Click Edit on the Menu Bar, Click Preferences and select Code Format. Selections will apply to all new pages created. Preferences can also be imposed retroactively on existing pages by Clicking Commands, then Apply Source Formatting.

Panels

Panels are the Cornerstone of Site Creation. To maximize workspace view, you can quickly toggle all panels on and off by pressing <F4> on your keyboard.

To View a Closed Panel Click Window on the Menu Bar, then check the Panel you'd like to view. To hide, uncheck the Panel. **Can't see an open panel?** Click Window on the Menu Bar and then Arrange Panels. All Panels will be neatly arranged automatically.

Panels are arranged by **Groups** of related Panels. The Panels in Dreamweaver MX are as follows:

Design:

CSS Styles: "Cascading Style Sheets" applies CSS Style Sheets to a selection. Good starting point for designing new pages.

HTML Styles: Apply/Remove HTML Styles.

Behaviors: Assign and modify actions to selected page elements (e.g. play a sound when mouse goes over an image.)

Files:

Site: Name, Create, Edit, View, Upload and Download a Website.

Assets: View and insert site assets (images, flash animations, movies, shockwave files, library items). Assets Panel can only be used *after* site is defined.

Code:

Tag Inspector: Edit tag properties and attributes. Once updated, Click anywhere in the panel to apply.

Snippets: Store content for quick reuse. Snippets of HTML, JavaScript, CFML, ASP, JSP and more can be created and inserted.

Reference: View reference information for various Dreamweaver languages. To quickly get reference, highlight item and click Reference on the toolbar.

Application:

Database: Create and edit site databases

Bindings: Apply dynamic objects, text and more.

Server Behaviors: Create, edit insert server behaviors.

Components: Inspect, create, insert component code.

Answers:

Get answers to Dreamweaver MX questions, Tutorials and information on What's New in MX. Click Update to get the latest product updates.

Others:

Code Inspector: Just like code view, but in new window.

Frames: View frames on page.

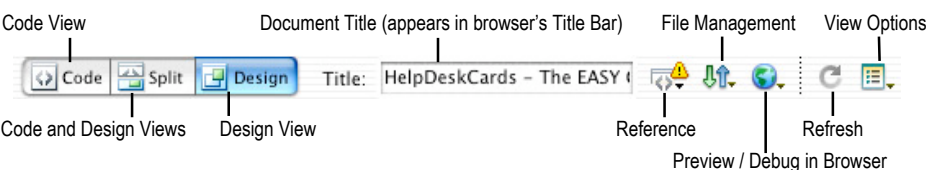
History: View, Repeat and Undo previous steps.

Layers: Manage page layers.

Sitespring: Collaborate online (no longer updated.)

Timeline: View and adjust timeline of image or layer.

Document Toolbar



Create Thin Borders on Tables Easily by using a table within a table. Start with outside table and define it as having one row, one column, no cellspacing, and both border and cellpadding set to 1. Click inside this table and insert "actual" table – it's width should be 100% and border set to 0. The first line around the first table defines the border

Keyboard Shortcuts


Menu Commands

New File	<⌘> + <N>
Open File	<⌘> + <O>
Open in Frame	<⌘> + <Shift> + <O>
Close File	<⌘> + <W>
Save File	<⌘> + <S>
Save File As	<⌘> + <Shift> + <S>
Print Code	<⌘> + <P>
Check Links	<Shift> + <F8>
Undo	<⌘> + <Z>
Redo	<⌘> + <Y>
Cut	<⌘> + <X>
Copy	<⌘> + <C>
Paste	<⌘> + <V>
Copy HTML	<⌘> + <Shift> + <C>
Paste HTML	<⌘> + <Shift> + <V>
Select All	<⌘> + <A>
Select Parent Tag	<⌘> + <[>
Select Child	<⌘> + <] >
Find and Replace	<⌘> + <F>
Find Next	<F3>
Preferences...	<⌘> + <U>
Refresh Design View	<F5>
Refresh Live Data	<⌘> + <R>
Show/Hide Rulers	<⌘> + <Alt> + <R>
Show/Hide Grid	<⌘> + <Alt> + <G>
Snap to Grid	<⌘> + <Alt> + <Shift> + <G>
Show Panels	<F4>
Help	<F1>

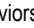
Site Commands

Site Files	<F8>
Site Map	<Alt> + <F8>
New Window	<⌘> + <N>
Assets	<F11>
Rename	<F2>
Exit	<⌘> + <Q>
Refresh	<F5>
Refresh Local	<Shift> + <F5>
Refresh Remote	<Alt> + <F5>
Show/Hide Link	<⌘> + <Shift> + <Y>
View As Root	<⌘> + <Shift> + <R>
Show Page Titles	<⌘> + <Shift> + <T>
Check Links Sitewide	<⌘> + <F8>
Link to New File	<⌘> + <Shift> + <N>
Link to Existing File	<⌘> + <Shift> + <K>
Change Link	<⌘> + <L>
Remove Link	<⌘> + <Shift> + <L>
Minimize All	<Shift> + <F4>
Restore All	<Alt> + <Shift> + <F4>
Get	<⌘> + <Shift> + <D>
Put	<⌘> + <Shift> + <U>
Quit Application	<⌘> + <F4>
Insert Window	<⌘> + <F2>
Open HTML Window	<F10>
Preview in Browser	<F12>
Preview in Secondary Browser	<Shift> + <F12>; <⌘> + <F12>
Cancel FTP	<Esc>
Debug in Browser	<Alt> + <F12>

Dreamweaver Tips

Edit, View and Add Keyboard Shortcuts: Click Dreamweaver on the Menu Bar, then Click "Keyboard Shortcuts..." In the dialog box all keyboard shortcuts can be viewed and assigned actions can be edited with new keyboard shortcuts or can be assigned shortcuts if unassigned. To print a complete list of shortcuts, Click the "Export Set as HTML" icon  and print resultant (14+ page) file.

Make Templates for Quick Content development across pages. Make a page that will be, more or less, consistent across the site. Click File on the Menu Bar, then Click Save as Template. Name and save. Sections of the page can be modified by clicking the area then Click Modify on the Menu Bar, Click Templates, then New Editable Regions. Name the Section and in the Design Pane the name will appear a different color. Continue to add editable regions as necessary. NOTE: Areas that are not marked as editable cannot be changed.

Change Status Bar Messages To Customize messages – which are generally URL's for links and images – by Clicking Window on the Menu Bar and Click Behaviors to open the Behaviors Panel. Under the Behaviors Tab, Click the Plus sign icon  and click Set Text, then Set Text of Status Bar to customize. JavaScript expressions may be used too.

Sort Tables Easily, Even Non-Continuous, by selecting the tables (hold down the <⌘> key to select more than one table), then Click Commands on the Menu Bar and Choose Sort Table. Especially handy for pages with complex tables. NOTE: Tables with merged cells cannot be sorted.

To Better Preview Layer Positioning Without leaving Dreamweaver – Click View on the Menu Bar and Deselect Layer Borders, which leaves the layer outline displayed when the layer is selected.

Center an Image, Small Icons With Text, automatically by inserting image next to text. Then select the desired image with a single click and then on the Property Inspector Panel choose Align Entry – Absolute Middle.




Quickly Replace an Image to the Same Size every time. When an image is replaced the arrival is automatically adjusted to the height and width of the first image. Adjust properties manually after import.

TheHelpDesk

Always Use Netscape Resize Fix to ensure that your site will have maximum compatibility with all Netscape browsers when the user resizes their browser window. Click Commands on the Menu Bar and Click on "Add/Remove Netscape Resize Fix..." to have Dreamweaver put JavaScript into the page. Click Add. Repeat and Click Remove to remove.

Keep Imported Graphics Aspect Ratio by holding down the <Shift> key while resizing. The current Height/Width Ratio will be maintained.

View/Hide the Property Inspector Quickly by

Use the Layout Cell & Table Buttons To quickly draw table cells in an empty area of page or inside a Layout Table. Click Button  and  click and drag the cell in the desired location. Click on the border to move or resize the inserted cell, or Click anywhere within the cell to insert content. To create several cells within a row press the <Ctrl> key while dragging the cell. Use the Layout Table button to draw  table in an empty area of the page or within another layout table. NOTE: Creating a Layout Cell automatically creates a layout table.

Make Customized Submit Buttons by Clicking Insert on the Menu Bar, then Form Object, then Button. A Button labeled "Submit" appears on the page. Change the text on the button by entering a different Label value in the Property Inspector panel for the button. To create a custom Submit button image, use an image editor to create and save image, then Click on Insert on the Menu Bar, Click Form Object and then Image field. Browse to saved image and select it.

Run Link-Checker When Moving a Site: To double check relative links. Press <Shift> + <F8>

